

Specifications

Model		B2301HSD	B2601HSD	B2401DT	B2401DTWO	B2401DTN
Engine						
Type		E-TVCS, liquid cooled, 3-cylinder diesel				
Make, Model		Kubota D1005		Kubota D1105		
PTO horsepower	HP (kW)	17.5 (13.0)	19.5 (14.5)		19.2 (14.3)	
Engine gross horsepower*	HP (kW)	20.9 (15.6)	24.3 (18.1)		21.9 (16.3)	
Rated RPM	rpm	2800		2600		
Bore and stroke	in. (mm)	3.0 x 2.9 (76 x 73.6)		3.1 x 3.1 (78 x 78.4)		
Displacement	cu. in. (cc)	61.1 (1001)		68.5 (1123)		
Air cleaner		Dual paper element				
Lubrication		Forced lubrication				
Cooling system		Pressurized radiator				
Radiator fan		Radial air flow				
Capacities						
Fuel tank	gal (ℓ)			6.1 (23)		
Cooling system	qts. (ℓ)			4.0 (3.8)		
Engine oil	qts. (ℓ)			3.3 (3.1)		
Transmission case	gal (ℓ)	4.0 (15)		3.3 (12.5)		
Drive train						
Clutch		N/A		Dry single plate		
Transmission		HST (3 ranges)		Gear (9 Forward, 3 Reverse)		
Differential lock		Standard				
Final drive		Spur gear				
Brake		Multi-plate wet disc				
PTO						
Type		Independent		Transmission driven with one way clutch		
Rear	rpm	540		540, 1000		540, 980
Mid	rpm	2500		N/A		
Hydraulics						
Type		Open center				
Pump		Dual pump				
Total pump output	gpm (ℓ/min.)	8.3 (31.4)		7.0 (26.4)		
Hydraulic outlet		Rear outlet		Front & Rear outlet		
3-point hitch		Category I				
Hydraulic control system		Position control valve				
Lift capacity at lift point	lbs. (kg)	1808 (820)		1653 (750)		
24" behind LP	lbs. (kg)	1411 (640)		1290 (585)		
Steering		Hydraulic power steering		Integral type power steering		
Standard tire size						
Front (Farm)		6-12	7-12	6-12	5-12	
Rear (Farm)		9.5-16	11.2-16	9.5-16	8-16	
Traveling speeds						
Forward	mph (km/h)	0-11.9 (0-19.1)	0-12.7 (0-20.4)	0-11.7 (0-18.8)	0-10.9 (0-17.5)	
Reverse	mph (km/h)	0-8.9 (0-14.3)	0-9.5 (0-15.3)	0-6.0 (0-9.6)	0-5.6 (0-9.0)	
Dimensions						
Overall length (w/o 3P)	in. (mm)	93.7 (2380)	94.9 (2410)	93.9 (2385)	92.9 (2360)	
Overall width (min. tread)	in. (mm)	45.3 (1150)	49 (1245)	44.3 (1125)	35.4 (900)	
Overall height	in. (mm)	83.9 (2130)	85.0 (2160)	83.9 (2130)	75.2 (1910)	
Wheelbase	in. (mm)	61.4 (1560)				
Ground clearance	in. (mm)	12.0 (305)	12.8 (325)	12.0 (305)	11.8 (300)	
Turning radius with brake	feet (m)	6.9 (2.1)				
Weight	lbs. (kg)	1566 (710)	1632 (740)	1521 (690)	1334 (605)	

*SAE J1995

Kubota Tractor Corporation reserves the right to change the stated specifications without notice. This brochure is for descriptive purposes only and reasonable efforts were used to set forth the contained information; some items shown may be optional and some products shown may not be available at all dealerships. Kubota disclaims all representations and warranties, express or implied, or any liability from the use of this brochure. For complete warranty, safety and product information, consult your local Kubota dealer and the operator's manual. Power (HP/KW) and other specifications are based on various standards or recommended practices. For your safety, Kubota strongly recommends the use of a Rollover Protective Structure (ROPS) and seat belt in almost all applications. This brochure is intended for the United States and US territories only. For information regarding Kubota products or services outside these areas, see Kubota Corporation's global web site. Kubota does not provide parts, warranty or service for any Product which is re-sold or retailed in any country other than the country for which the Product(s) were designed or manufactured.



For Earth, For Life
Kubota

B

KUBOTA DIESEL TRACTOR B01 Series HST / Gear / Narrow Specialty

Equipped from front to rear with industry-leading, easy-to-use features, including models with powerful and economy gear drive transmissions, Kubota's B01 Series is the total package.



Kubota®

©2020 Kubota Corporation



KUBOTA TRACTOR CORPORATION

1000 Kubota Drive, Grapevine, TX 76051 Tel 888-4 KUBOTA

Visit our web site at: KubotaUSA.com

**Kubota
Genuine Parts**
for maximum
performance,
durability and
safety



Cat.No.4363-01-US Printed in Japan.D.REX.'20-JAN.

Kubota's new B01 Series compact tractors are operator friendly. They are able to handle real work all day, everyday.

Whether you are mowing lawns, landscaping or working on light construction, Kubota's new B01 Series tractors are the ideal tools for the job. Each model offers a wide range of innovative features to provide more comfort and efficiency for the utmost productivity.

The B01 Series new gear-drive models include the affordable DT and DT Narrow that are ideal for both homeowners and professionals with specific needs. When combining the ease-of-use and versatility with the power and reliability of renowned Kubota engines and transmissions, you can complete almost any tasks you wish.

B01

HST Models



B2601



B2301



B2401DT Narrow



B2401DT/DTWO

Gear-drive Models

Model	B2301	B2601	B2401DT	B2401DTWO	B2401DTN
PTO horsepower HP (kW)	17.5 (13.0)	19.5 (14.5)		19.2 (14.3)	
Engine gross horsepower HP (kW)	20.9 (15.6)	24.3 (18.1)		21.9 (16.3)	
Transmission type	HST (3 range)		Gear (F9/R3)		
Loader valve	Standard (Compatible with 1-Lever Quick Coupler)			Optional	N/A

ENGINE / TRANSMISSION EASY OPERATION

B01



Engine

20.9 / 21.9 / 24.3 HP liquid-cooled diesel engines, with Kubota's E-TVCS (three-vortex combustion system), offers tremendous power, high torque, cleaner emissions, and low noise and vibration.

One-piece Metal Hood

The front grill and newly designed headlights are integrated with the hood for easier opening and closing. The hood also provides more convenient access to the engine.

12V Socket

Charge your cell phone or other electronic devices with the 12-volt socket.



HST Models

3-range HST

Our proven hydrostatic transmission provides the B01 Series with smooth shifting and powerful performance for heavy-duty loader applications. With an increased maximum speed and three range shift-speeds (Low/Med/High), the B2301/2601 models let you find the right speed to suit your task, for outstanding productivity.

Cruise Control (HST models)

Kubota's cruise control allows you to set, increase/decrease and override pre-set speeds quickly and conveniently.



Gear-drive Models

The B2401DT is an economical and reliable gear model with 9 forward and 3 reverse speeds.

Pedal Layout

To increase efficiency and comfort of the HST pedal, the brake pedals have been relocated to the drivers left hand side. Gear-type models feature an optimal layout of clutch and brake pedals that maximize leg space.

Position Control

To easily adjust the height of implements, the 3-point hitch can be raised or lowered with the 3-point position control, according to the position control lever's stopping point.

Lever Guides

The B01 Series features large, angled lever guides. Control lever recognition and operation is simple, intuitive, and hassle-free even for novice operators.



Gear-Drive Models



Left Side



Right Side

HST Models



Left Side



Right Side

Gear-Drive Models



Powerful Category I, 3-point Hitch

The 3-point hitch accepts a variety of implements for all your varying needs. Robust and versatile, the hitch can handle rotary tillers, box blades, finishing mowers, and more.

Hydraulic Independent PTO (HST Models)

The Independent PTO provides continuous travel movement since it is independent from the HST travel control.

Telescoping Stabilizers

Attaching and detaching rear implements has never been simpler. The horizontal sway of the implement is easily adjusted by aligning and setting the pin in the proper hole.



Factory Rear Remote Control Valve Kit (Optional)

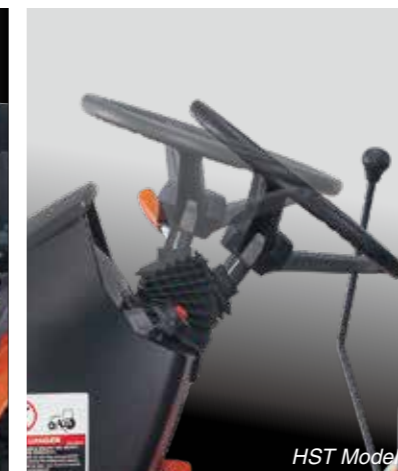
The B01 Series HST models offer two optional rear remote control valves to allow acceptance of more rear implements.

Compatible with 1-lever Quick Coupler

Flat-faced, no spill coupler allows swift removal of hydraulic hoses for front attachments without the mess from hydraulic oil spillage.

Expansive Operator Platform

Thanks to a large, ISO-mounted flat deck, the operator enjoys plenty of legroom and a wider step area for easier mounting and dismounting. Widely spaced fenders also contribute to a comfortable, spacious environment.



High-back Seat (HST Models)

To increase comfort while working, the new high-back seat is specifically designed to absorb shock and reduce operator fatigue. Armrests are standard equipment for added comfort.

Tilt-steering Wheel (HST Models)

The steering wheel tilts by the easy-step pedal to improve steering comfort.

NARROW MODEL B2401DT NARROW

The narrowest tractor available, ideal for vineyards, nurseries and greenhouses



35.4 inch

Industry Exclusive Narrow Tractor

Kubota's new B2401 Narrow is now the shortest width tractor to date, making it ideal for spraying, mowing and towing between tight rows. With a total width of just 35.4 inches, the B2401 Narrow can easily maneuver between rows just 48 inches apart.

Less weight, less damage for crops

At a mere 1334 lbs., the B2401 won't damage the roots of trees and vines as it passes between tight rows.

Powerful, durability and versatility

With high horsepower and excellent durability, and easy attach/detach implements, the B2401 can do anything in any season. Spraying in the Spring, mowing in the Summer and harvesting in the Fall.

FRONT LOADER B01



LA435 Swift-Tach Loader

Remove your front loader in less than 70 seconds, without having to leave the operator platform. Additionally, the standard, flat-faced, no spill 1-lever Quick Coupler enables removal of all 4 hydraulic hoses simultaneously, without the hassle of hydraulic oil spillage.

2-Lever Quick Coupler (Optional)

Kubota's quick coupler features two levers to make quick work of attaching and detaching front implements like pallet forks, snow blades, and more.

Mechanical Self-leveling (Optional)

The all new Mechanical Self-leveling option automatically maintains the angle of the loader's attachment, which provides better loader lever control and is perfect for pallet fork applications.



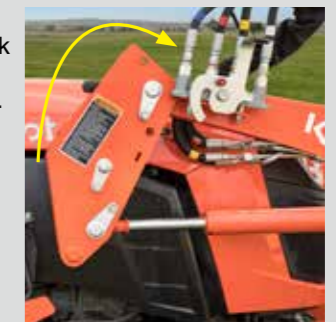
Loader Detach Procedure



Lower the front loader stand by pulling stand release lever.



Disengage the auto-lock connecting mechanism.



Disengage the hydraulic couplers.

Now you are done!



2-Lever Quick Coupler (Optional)

Front Loader Specifications

Model		LA435
Maximum lift height (to bucket pivot pin)	in. (mm)	78.5 (1995)
Clearance with attachment dump	in. (mm)	61.7 (1568)
Maximum dump angle	deg.	40
Bucket roll-back angle	deg.	25
Lift capacity (Bucket pivot pin, max height)	lbs. (kg)	948 (430)
Lift capacity (19.7in. forward, max height)	lbs. (kg)	659 (299)
Breakout force (Bucket pivot pin)	lbs. (kg)	2146 (973)
Breakout force (19.7in. forward)	lbs. (kg)	1520 (690)
Net weight (approx.)	lbs. (kg)	208 (459)*

* Include the main frame and 50" rigid bucket.

MID MOUNT MOWER & BACKHOE

FRONT ATTACHMENTS

B01

Wide range of implements enables B01 to perform multiple jobs. Implements are designed for quick and easy attach / removal, so switching between attachments is simple.



Drive-Over Mid-Mount Mower*

Attach the mower quickly and with ease. Simply drive the tractor over the mower to position it for fast attachment and detachment. **Height of mower deck should be 3 inches or less.*



Cutting Height Adjustment Dial Suspended Mower Deck

BH70 Backhoe

Kubota's original BH70 Backhoe is performance-matched with the B01 Series tractors to provide more power and greater digging capacity. It also features a reversible seat for more efficient operation.

4-point Quick-Attach System

With its pin-and-hook type quick-attach system you can switch easily, between the backhoe and other rear implements, all without tools. This means even complex tasks can be handled with unparalleled efficiency.



Reversible Seat



4-point Quick-Attach System

Mid-Mount Mower Specifications

Model	RCK54-32	RCK60-32
Type	Side Discharge	
Number of blades	3	
Blade length	in. (mm) 18.7 (475)	20.6 (523)
Mounting method	Suspended	
Cutting width	in. (mm) 54 (1372)	60 (1524)
Cutting height	in. (mm) 1.0 to 4.0 (25 to 102)	
Adjustment of cutting height	Dial	
Weight (approx.)	lbs. (kg) 300 (136)	322 (146)

Backhoe Specifications

Model	BH70	
Transport height	in. (mm)	73.1 (1856)
Stabilizer spread - transport	in. (mm)	50.4 (1280)
Ground clearance	in. (mm)	10.3 (262)
Digging depth 2ft flat bottom	in. (mm)	85.2 (2165)
Operating height fully raised	in. (mm)	113.0 (2869)
Loading height (length of dipper cyl.=680mm)	in. (mm)	61.6 (1474)
Loading reach (length of dipper cyl.=680mm)	in. (mm)	45.6 (1157)
Reach from swing pivot	in. (mm)	116.8 (2966)
Swing pivot to rear axle center line	in. (mm)	31.4 (797)
Angle of departure per SAE J1234	deg.	18.2
Swing arc	deg.	140
Net weight (approx.)	lbs. (kg)	904 (410)



Kubota 4-Point Quick Connect Front Hitch

Quickly connect or disconnect front PTO-driven attachments with the easy-to-use 4-Point Quick Connect Front Hitch.

4-Point Quick Connect Attachments

- 48" and 55" Commercial Snow Blower
- 50" Residential Snow Blower
- 60" Rotary Sweeper
- 60" Blade

NEW Goodyear R14 Tire

The Goodyear R14 Tire provides the ultimate versatile tread choice as an Ag / Industrial hybrid and is great for turf, mud, snow, and ice applications.



50" and 54" Standard Buckets
60" Light Material Bucket



Pallet Forks



48" and 55" Commercial Snow Blowers
50" Residential Snow Blower



60" and 72" Snow Blades
(with Optional Hydraulic control.)